

Serial No Module

1. Please go to Stock | Maintain Stock Item | Edit | Checked Serial No if this item you would like to control serial number.

Maintain Item **Step 1.1 : Tick as Serial no**

Maintain Stock Item

Code: Serial No. Stock Control Active

Description:

Item Group: Reorder Level: Remark 1:

Base UOM: Reorder Qty: Remark 2:

Ref. Cost: Lead Time: Barcode:

Ref. Price: Sales Tax: Tax Inclusive

Shelf: Purchase Tax: Bal Qty: 17

UOM	Cust. Price	Supp. Price	BOM	More Desc.	Opn Bal.	Category	Alternative	Cust. Item	Supp. Item	Barcode
UNIT	1	2.00								
CARTON	12	30.00								
BOX	60	92.00								

2nd UOM:

Default UOM:

Sales:

Purchase:

Stock:

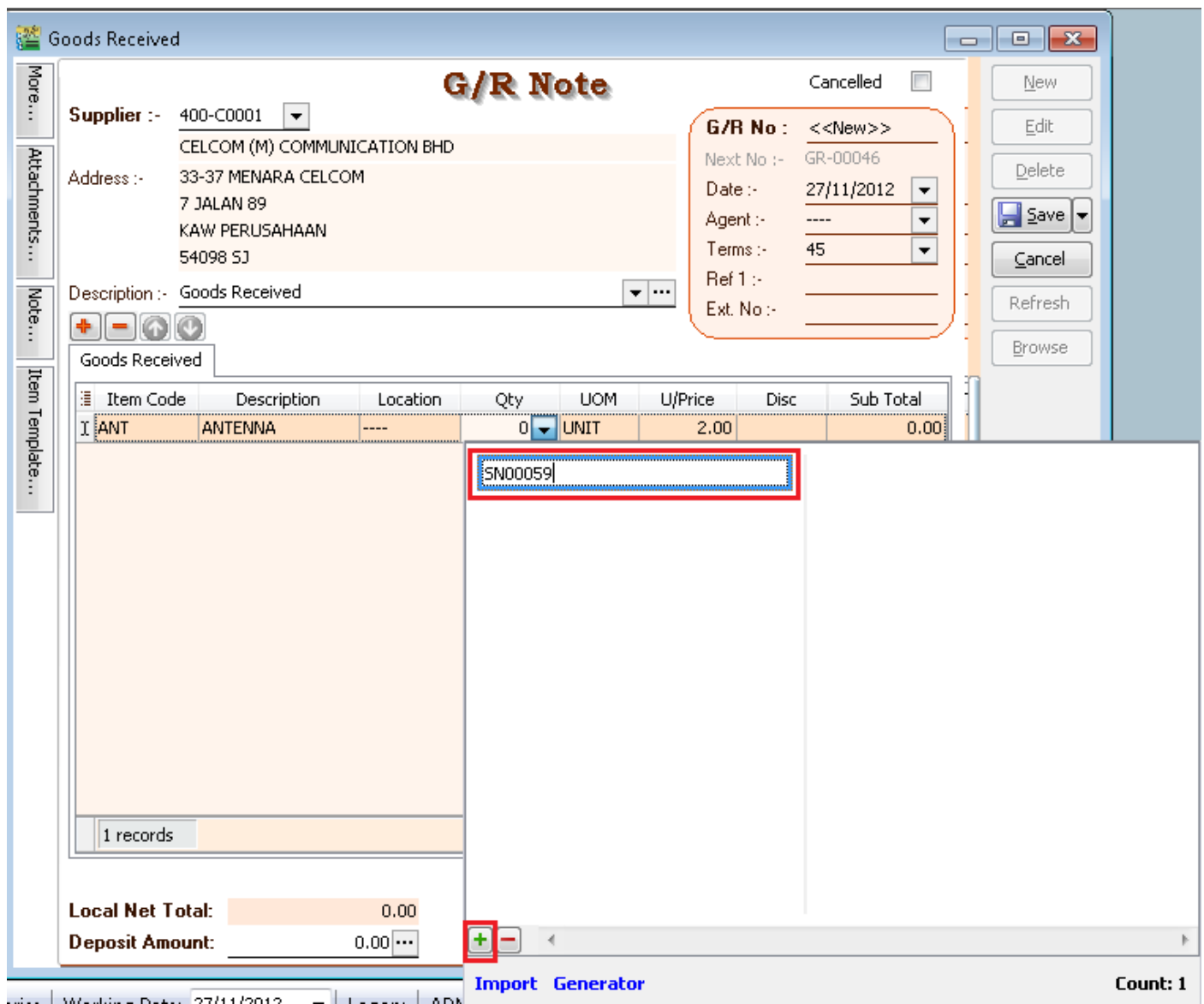
Close

2. **Purchase** | Goods Received Note | New |

2.1 There have 3 methods to apply serial no :

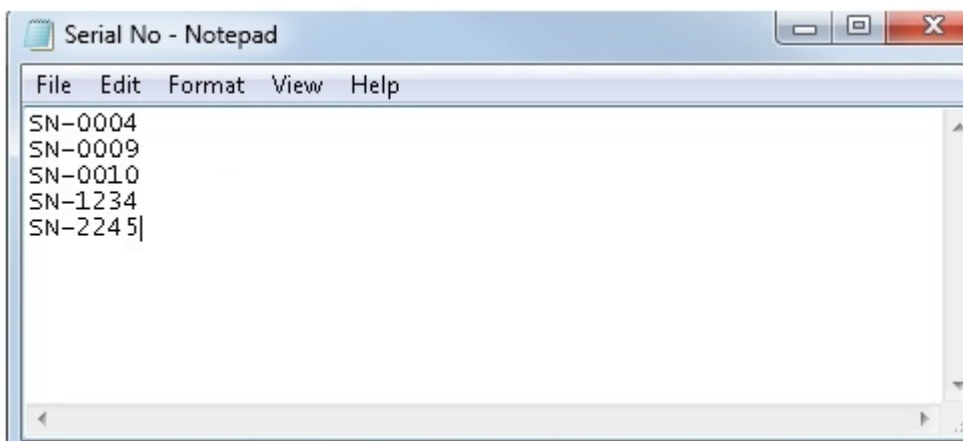
2.2 Method 1 : Manually Enter

2.2.1 : Click on + (Green Icon) | Manually Enter at Empty Box

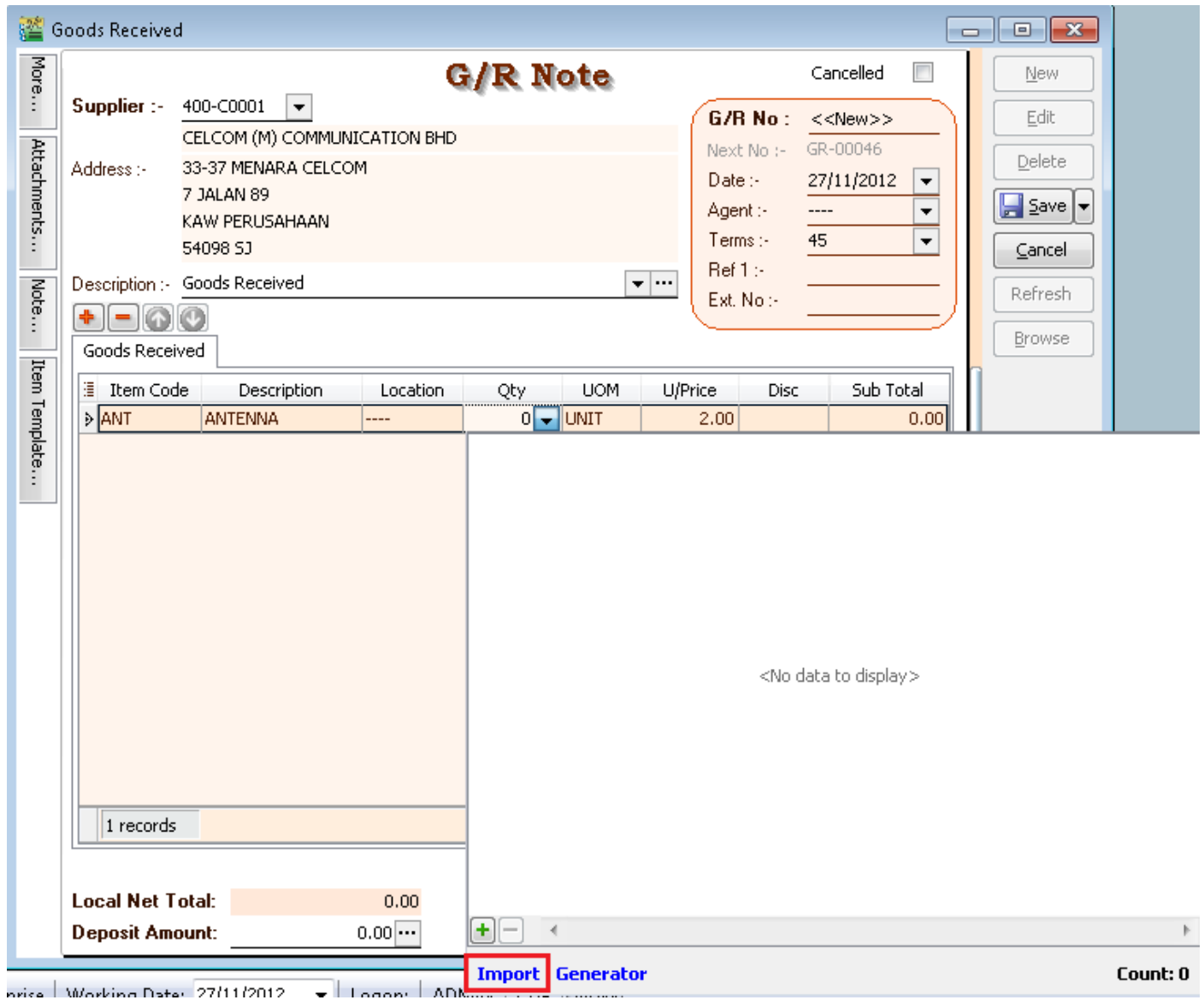


2.3 Method 2 : Import from Notepad / Word

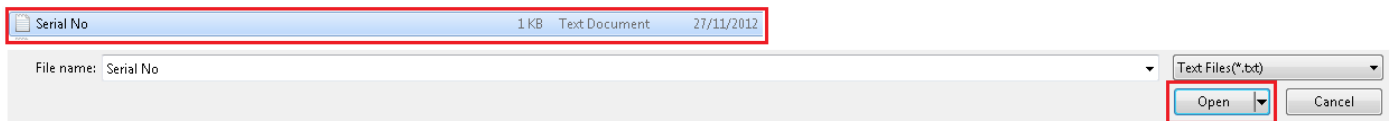
2.3.1 : Enter the Serial No at the notepad.



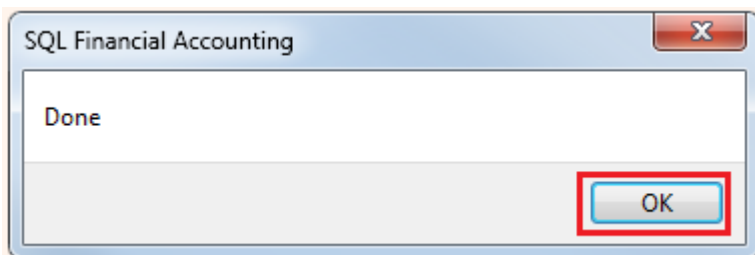
2.3.2 : Click Import |



2.3.3 : Select Notepad where you have saved to .



2.3.4 : Click Ok



2.4 : Method 3 : Generator

2.4.1 : Click on Generator |

Goods Received

G/R Note Cancelled

Supplier :- 400-C0001
CELCOM (M) COMMUNICATION BHD
Address :- 33-37 MENARA CELCOM
7 JALAN 89
KAW PERUSAHAAN
54098 SJ

Description :- Goods Received

G/R No :- <<New>>
Next No :- GR-00046
Date :- 27/11/2012
Agent :- ----
Terms :- 45
Ref 1 :-
Ext. No :-

Item Code	Description	Location	Qty	UOM	U/Price	Disc	Sub Total
ANT	ANTENNA	----	0	UNIT	2.00		0.00

<No data to display>

Local Net Total: 0.00
Deposit Amount: 0.00

Import **Generator** Count: 0

2.4.2 : Format = Serial No Format

Start From = What number you wish to start from

Count = How many units to generate

Stock Serial Number Generator

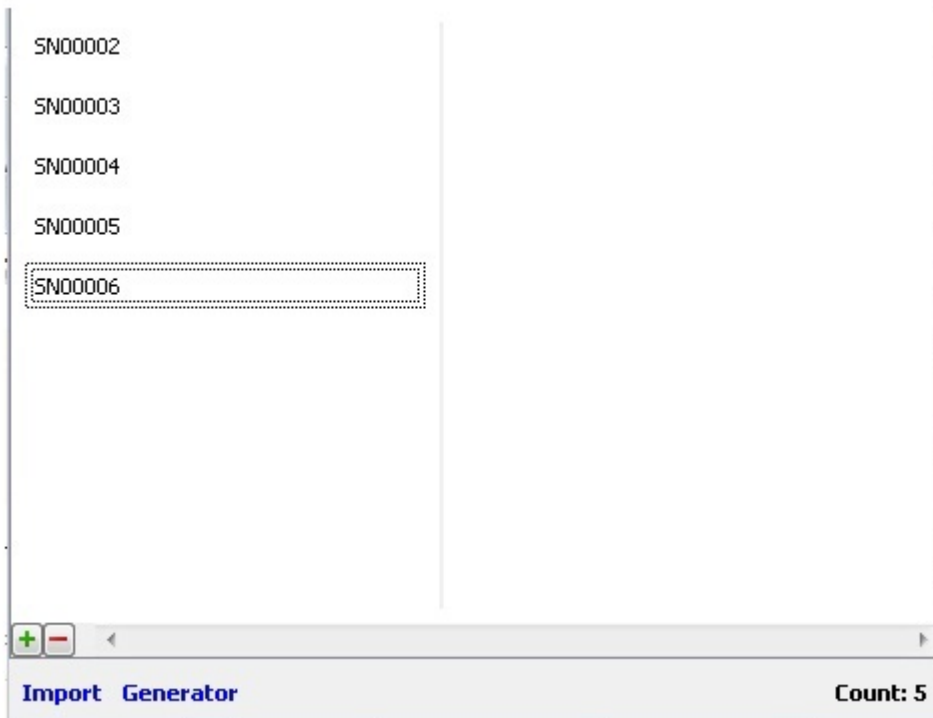
Format: SN%.5d
SN00002

Start From: 2

Count: 5

OK Cancel

2.4.2 : Here the output



Step 3 : Sales | Delivery Order | Click Add

Delivery Order

Customer : 300-A0002
ALPHA & BETA COMPUTER
Address :- 838 JALAN WOLLD
40485 RAWANG
SELANGOR DE

Description :- Delivery Order

Profit Estimator

Delivery Order

Item Code	Description	Locat...	Qty	UOM	U/Price	Discount	Sub Total
ANT	ANTENNA	----	1	UNIT	2.50		2.50

<No data to display>

1 records

Local Net Total: 2.50

Count: 0

* + (Green Color) Same method as 2.2

* Import same method as 2.3

4.1 Tick Serial No | Press Ok

Add Serial Number

CN-2245

SN-0004

SN-00059

SN-0009

SN-0010

SN-1234

SN00002

SN00003

SN00004

SN00005

SN00006

OK Cancel

Noted : Stock Adjustment does not support serial no. May using Stock Received and Stock Issue to replace .

Serial No Report

1. **Stock - > Print Stock Physical Worksheet** – Will show all balance serial number haven't use
2. **Stock - > Print Stock Card** - Tick Calculate Serial Number before apply
Noted : Checked Calculate Serial No | Only Report : Stock Card – Location
3. **Stock - > Print Stock Month End Balance** – Tick Calculate Serial Number before apply
4. **Stock - > Print Stock Serial No Conflict**
 - i) To check non Existent Serial No. Example : Purchase for this Item the serial number is 555666, but when stock out stock the serial number is 222333.
 - ii) To check duplicate Serial Number received at the same location / batch for the same item. If return in the stock with same serial number and out again will not consider conflict.
5. **Stock - > Print Stock Outstanding Serial No**
 - i) For those documents Issued or Received do no applying serial no.
6. **Inquiry - > Print Serial No Inquiry**
 - i) Check serial no movement.
7. **Sales - > S/N Profit & Loss by Document**
 - This Report Cost is capture exactly from Stock In Serial Number Cost.
 - If DO transfer to IV, due to DO have deducted Serial number, so will not have any result for this report.

Access Right for Serial No

1. **Group Stock |Always match Qty with Serial No**
 - which mean this access right the serial no must match with Qty key in. Eg : 2 Qty must have 2 Serial No.
 - If checked this right, Print Outstanding Serial No will no result.
2. **Allow Non-Existent Serial No**
 - Which mean this access right control if tick which will allow out stock the serial number without match the serial number when purchase.
 - Example : Purchase for this Item the serial number is 555666, but when stock out stock the serial number is 222333. If you do not allow this, may uncheck this access right.
 - If unchecked this right, Print Stock Serial No Conflict will no result.

~~ Done ~~