

# Step by Step : SQL Account or Payroll – Network Setting

## Server PC Setting

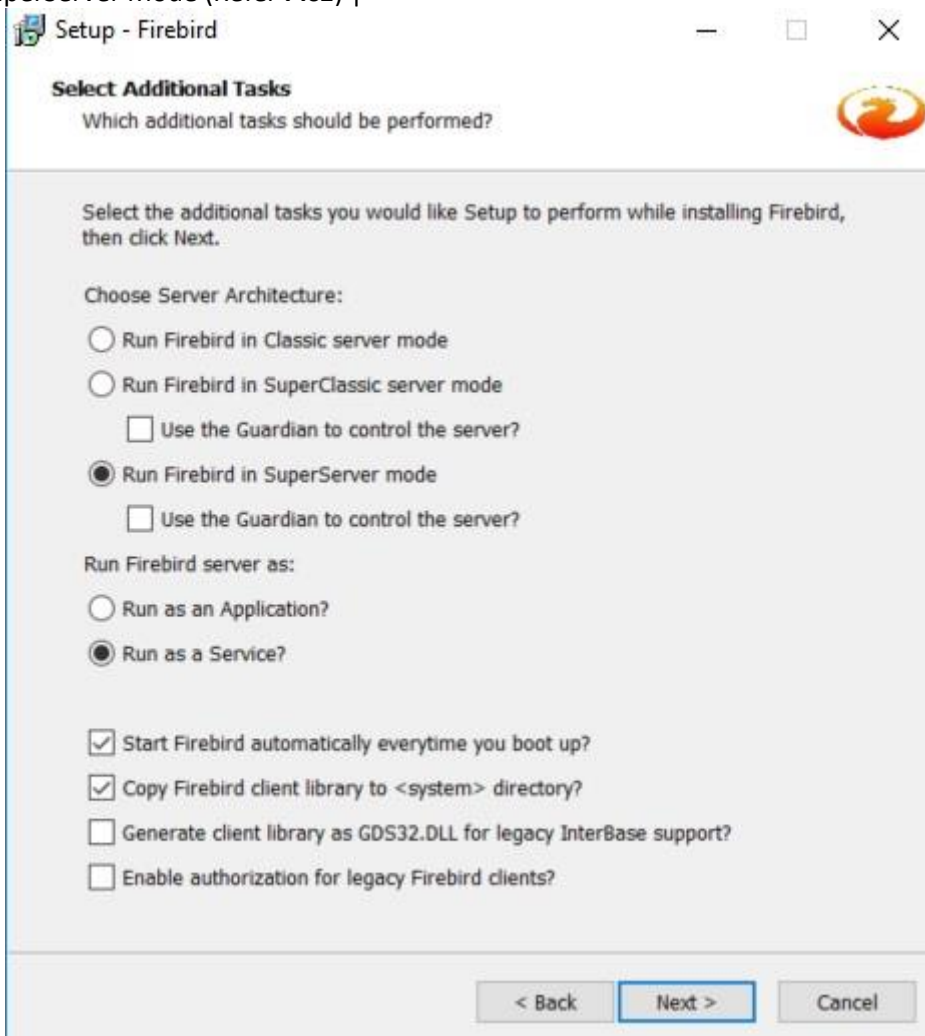
### 1 Session 1 : Install Firebird Version

Visit <http://www.sql.com.my/support/downloads> to download firebird version.

1.1 Install Firebird 3.0 version or higher. If Window System Type is 64 Bits, please download Firebird 3.0- 64 Bits

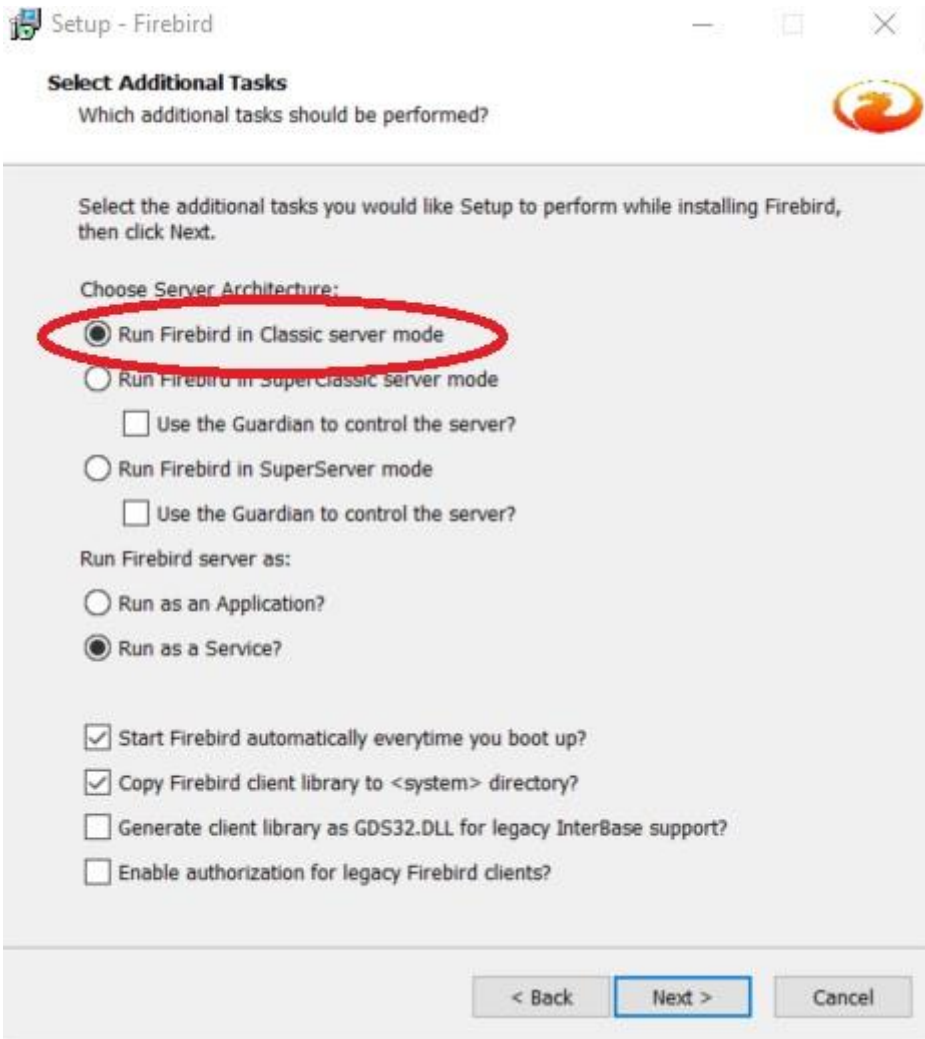
SQL Utilities	Description	
	<b>Firebird 3.0.1 Super Server for Windows x86</b> <b>32 bit windows</b> Download Latest Firebird Information Last updated: September 27, 2016 Current version: 3.0.1 Size: 6.91 MB License: Full New in this version <a href="#">Firebird 3.0.1 Release Notes</a>	
	<b>Firebird 3.0.1 Super Server for Windows x64</b> <b>64 bit Windows</b> Download Latest Firebird Information Last updated: September 27, 2016 Current version: 3.0.1 Size: 9.00 MB License: Full New in this version <a href="#">Firebird 3.0.1 Release Notes</a>	

1.2 Run Firebird setup | Press Ok | Select I accept the agreement | Click 5 times Next | Make sure it is Run Firebird in SuperServer Mode (Refer Pic1) |



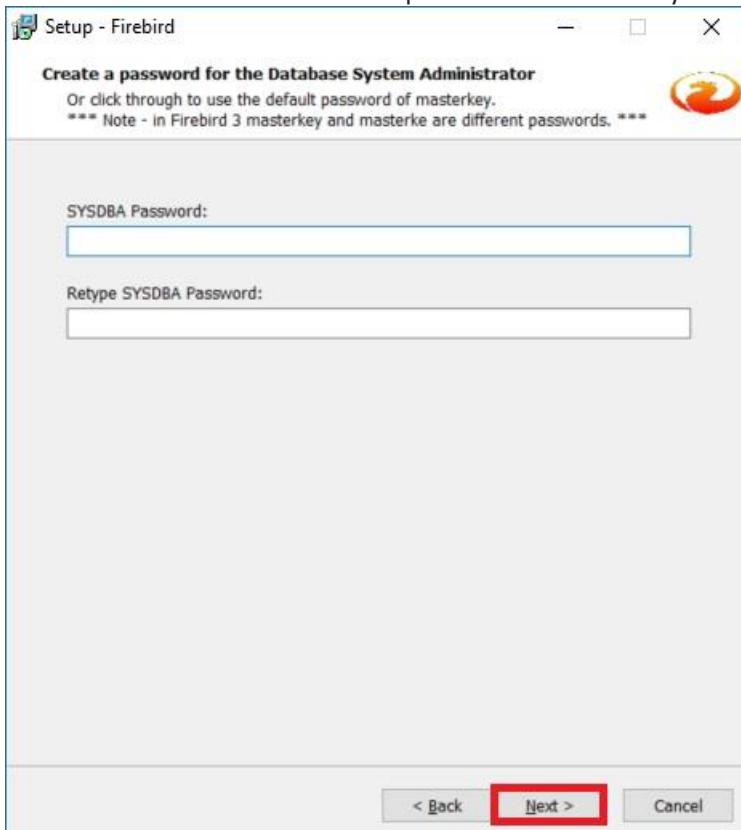
Pic 1

\* Tick Use Classic Server binary ONLY IF SERVER HAVE MORE THAN 16GB RAM (Refer Pic2) | Next |



Pic 2

1.3 : Leave it blank to use default password of masterkey.



1.4 Click on Next | Install | Next | Finish to complete

## **2 Session 2 : Window Firewall**

- 2.1 Control Panel | Window Firewall | Advanced Settings | Inbound Rules | New Rules |
- 2.2 Select Port | Next | TCP | Specific Local Port = 3050 | Next | Next | Next |
- 2.3 Name = Firebird | Finish

## **3 Session 3 : Network and Sharing Center**

- 3.1 Control Panel | Network and Sharing Center | Change Advanced sharing Settings |
- 3.2 Network Discovery
  - turn on Network Discovery
- File and Printer Sharing
  - Turn on sharing so anyone with network access can read and write files in the public folders
- Public Folder Sharing
  - Turn on Sharing so anyone with network access can read and write files in the Public folders
- File Sharing Connection
  - Use 128-bit encryption to help protect file sharing connections(recommended)
- Password protected Sharing
  - Turn off password protected Sharing

## **4 Session 4 : Share the SQL Account or Payroll Folder**

- 4.1 My Computer | Go to C:\eStream\SQLAccounting\Share or Go to C:\eStream\SQL Payroll\Share | Right Click | Properties | Sharing Tab | Advanced Sharing | Tick Share this Folder | Click Permissions | Tick Full Control | Press OK | Ok |
- 4.2 Click on Security Tab | Click Advanced | Click on Change Permissions | Click Add Button | At empty Box enter : Everyone | Press OK | Tick Allow Full Control | Press OK | OK | OK | OK

## **5 Session 5 : Install SQL Account or Payroll**

- 5.1 Run SQL Account or Payroll Setup | Click Next | Choose I Select the Agreement | Click Next |
- 5.2 Amend to C:\eStream\SQLAccounting or C:\eStream\SQL Payroll | Click Next | 3 times | Install | Click Finish
- 5.3 Create Group | Click DCF Group | Click save Button

5.4 Database Engine = Firebird Server | Click Test Connection. If the status shown in blue color, press OK (Refer Pic3)



Pic 3

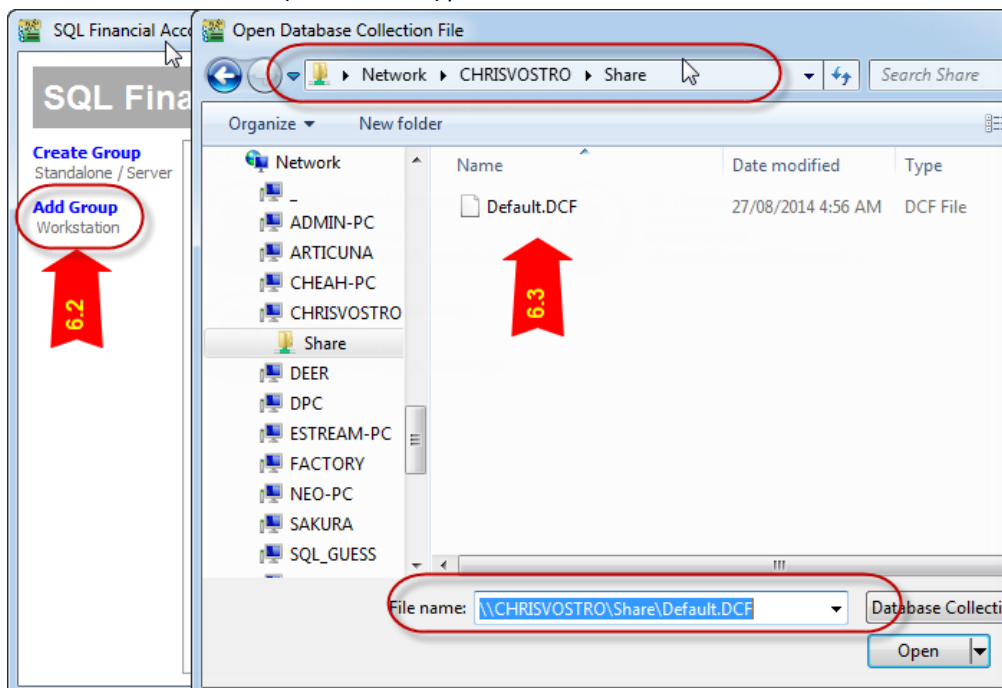
- Please take note of antivirus program. Have to add exception at Firewall

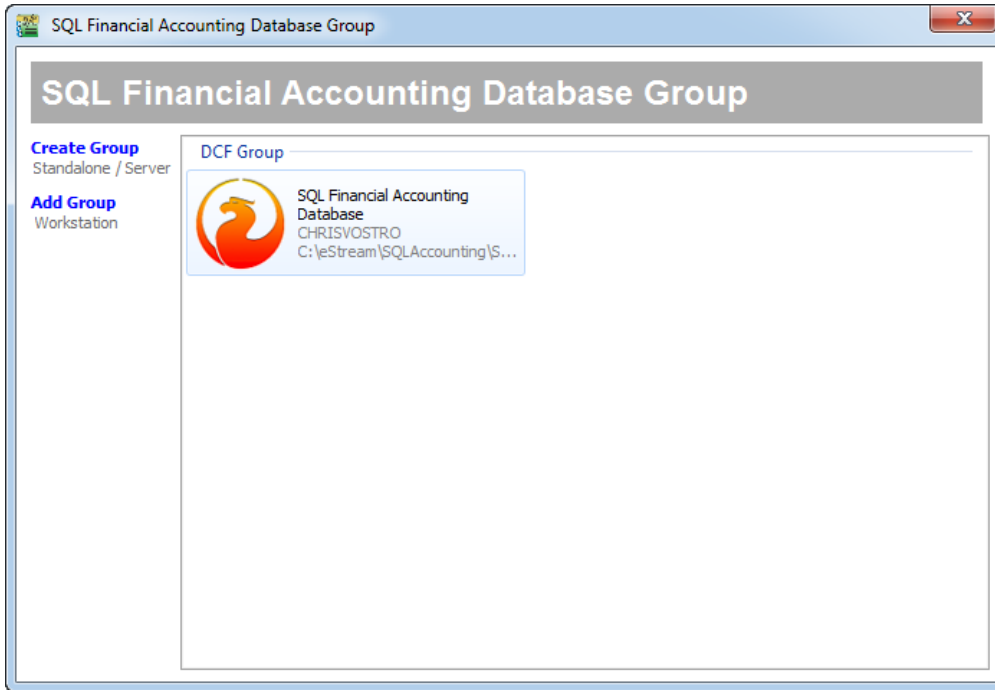
## 6 Session 6 : Client PC Setting

6.1 Run SQL Account or Payroll Setup | Click Next | Choose I Select the Agreement | Click Next 4 times | Install | Click Finish

6.2 Add Group | Click DCF File

6.3 Select Share folder (At Session 4) | Select Default DCF





6.4 Click on Firebird icon and Logon as usual.