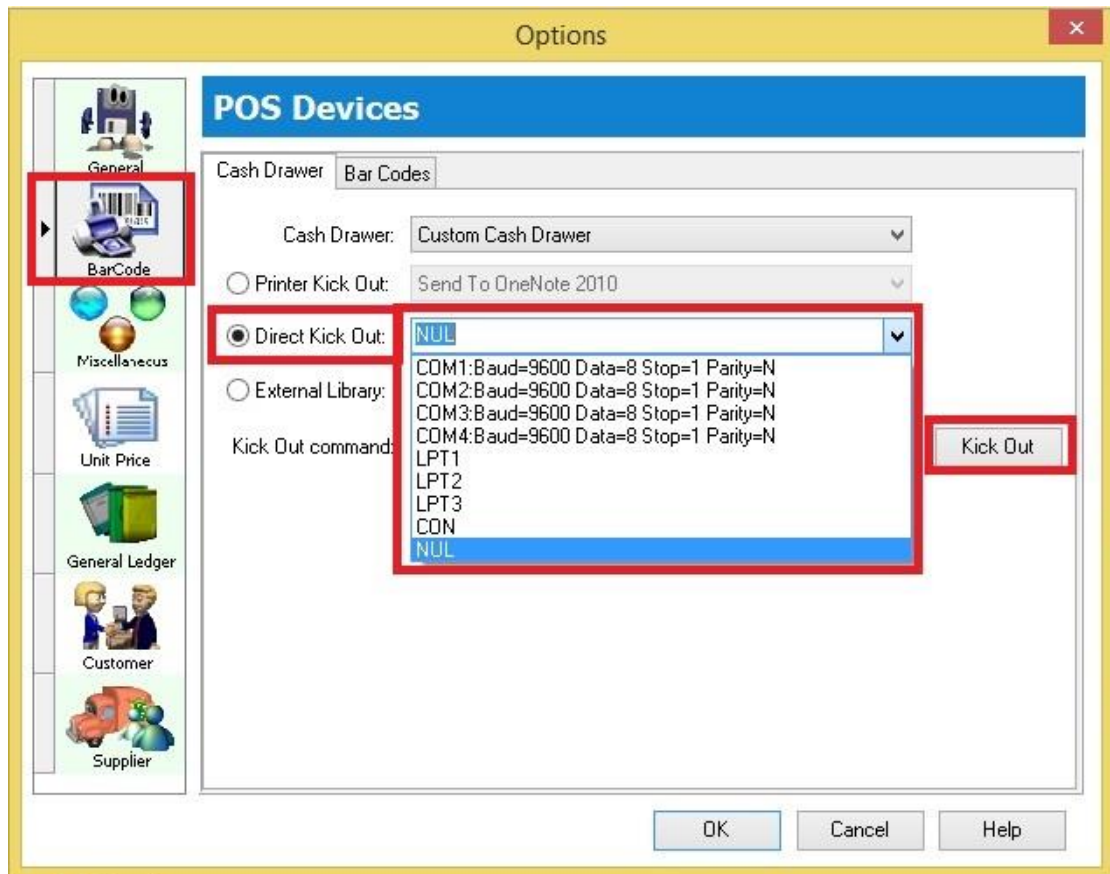


Step by Step : Set Cash Drawer

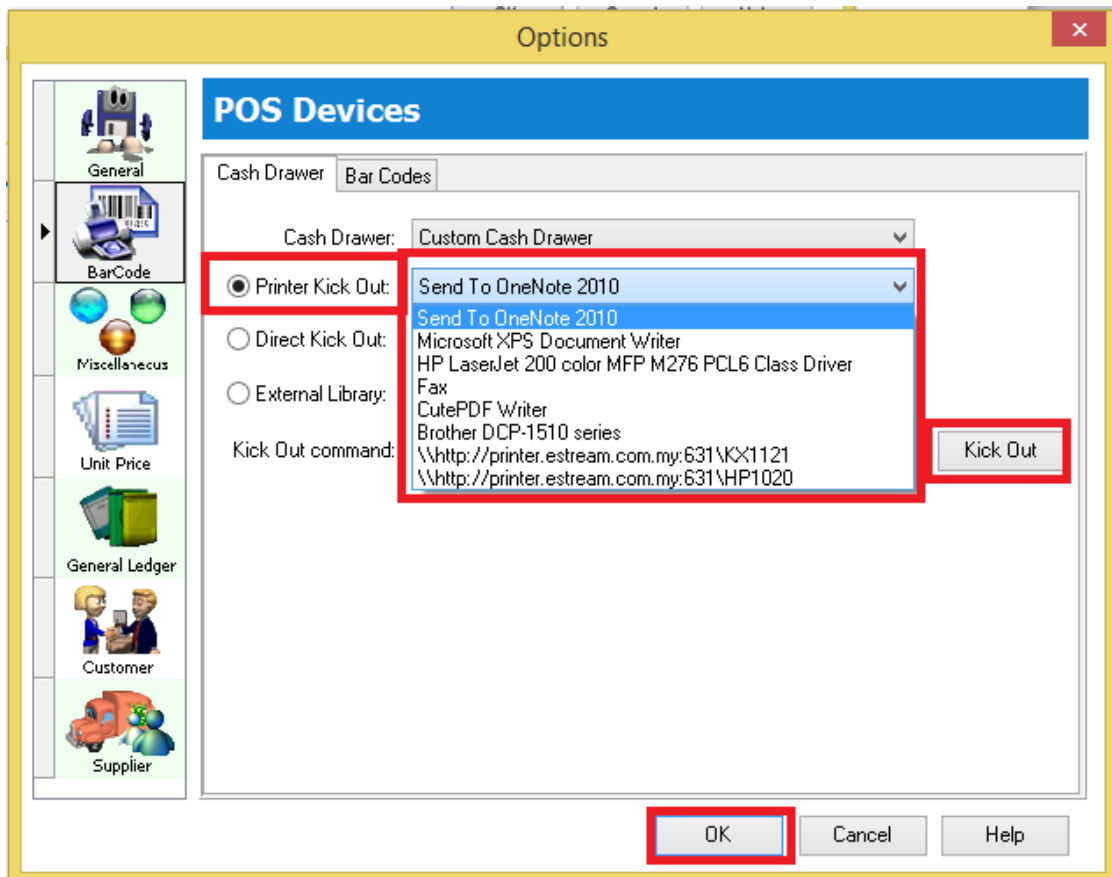
1. Tools | Option | Click on Barcode

Option 1 : Direct Kick Out : If your Cash Drawer direct connects to your PC.



* Select the correct Port No and then click on **Kick Out button** to test whether the Cash Drawer success kicks out, if the port no did not showing in list, may manually type in your Port No.

Option 2: Printer Kick Out



* Select your Printer Name and then click on **Kick Out button** to test whether the Cash Drawer success kicks out.

After done, press **OK** will do.

End.