

HOW TO PATCH FILE USING DIAGNOSIS

SITUATION: After clone master data, want to delete customer(AR) or supplier(AP).

STEP 1: MUST DO AT SERVER PC, ALL USER MUST LOGOUT FIRST.

+

STEP 2: GO www.sql.com.my/document DOWNLOAD THE PATCH FILE



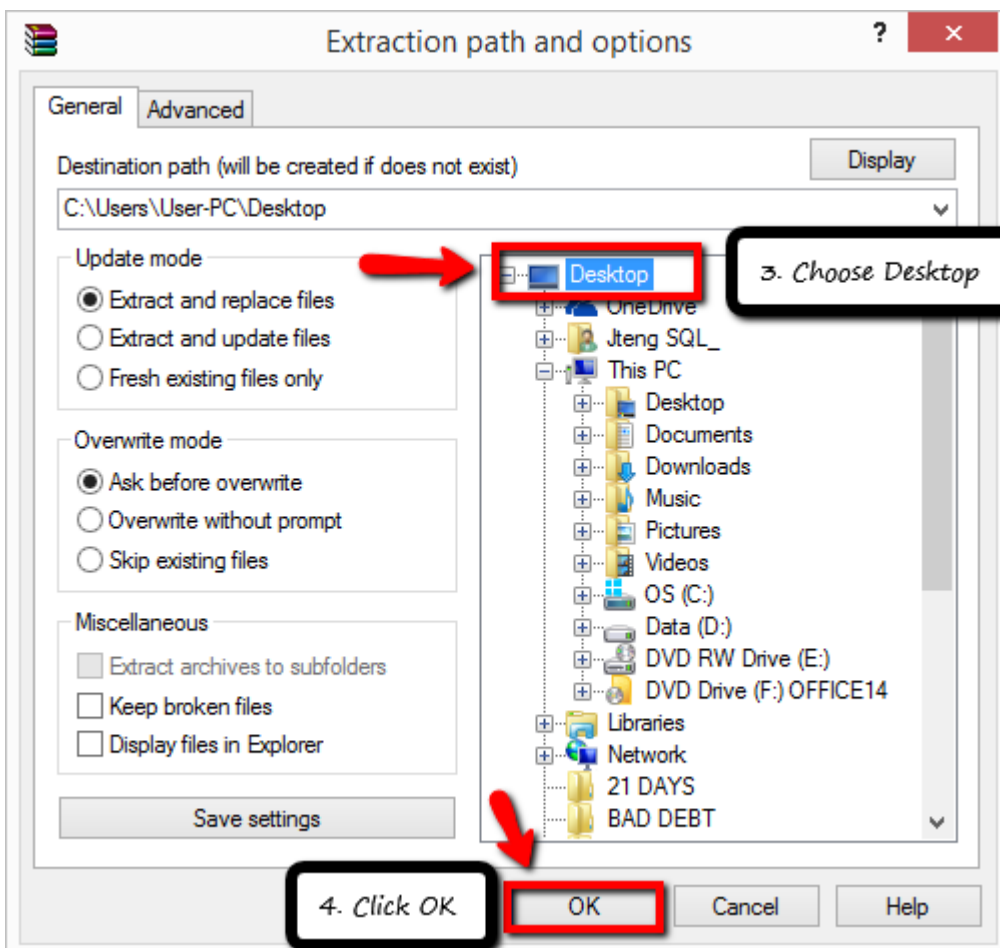
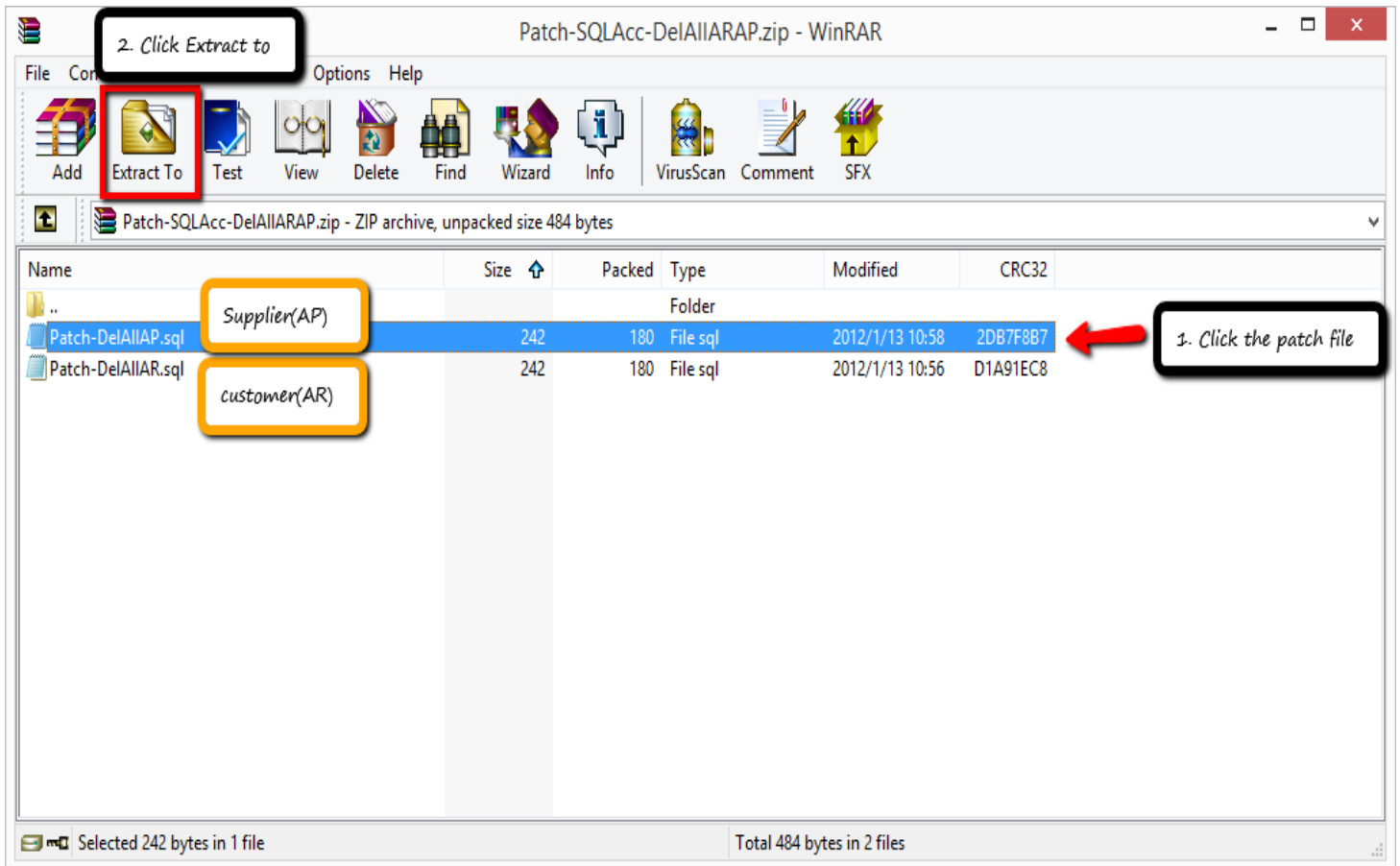
Index of /document

www.sql.com.my/document/

ImportExcelDiScrip...	22-Nov-2012	10:05	4.5K
JobOrder&PurchaseOrd...	07-Dec-2011	09:26	827K
Multi Version in 1 P...	09-Jun-2007	11:10	542K
NetworkSetting.doc	12-Sep-2014	14:47	310K
Patch-DelSYReportErr...	30-Mar-2015	14:31	369
Patch-Forwarding-705...	13-Apr-2015	18:59	14K
Patch-RemoveProfileE...	25-Jun-2014	12:46	272
Patch-SQLAcc-5CentRo...	01-Apr-2015	11:27	8.1K
Patch-SQLAcc-ARAPCop...	20-Nov-2012	10:56	3.7K
Patch-SQLAcc-Custome...	25-Sep-2014	11:04	395
Patch-SQLAcc-DIY-UnL...	18-Jul-2014	17:31	1.3K
Patch-SQLAcc-DelARCB...	18-Jan-2011	18:11	204
Patch-SQLAcc-DelAllA...	13-Jan-2012	10:57	606
Patch-SQLAcc-DelAllA...	26-Jul-2012	11:24	1.2K
Patch-SQLAcc-DelDIYL...	07-Aug-2014	16:08	298
Patch-SQLAcc-DelPic.zip	21-Dec-2010	10:46	386
Patch-SQLAcc-DelST_I...	25-Jun-2010	15:02	214
Patch-SQLAcc-Display...	23-Dec-2014	15:24	4.2K
Patch-SQLAcc-ST_AJ-S...	31-Mar-2011	11:02	261
Patch-SQLAcc-ST_RC-S...	18-Feb-2011	14:55	261
Patch-SQLAcc-Unlocki...	27-Mar-2015	09:44	564
Patch-SQLAccV3-DelDI...	05-Jul-2010	15:57	229
Patch-SQLAccV3-DelGr...	25-Feb-2011	10:33	240
Patch-SQLAccV3-Reset...	22-Jun-2011	14:53	362
Patch-SQLAccV4-DelGr...	02-Jul-2010	11:04	223
Patch-SQLAccV4-Inser...	21-May-2014	08:33	523
Patch-SQLAccV4-Reset...	16-Apr-2013	09:32	386
Patch-SQLAccV4-Reset...	10-Jul-2012	15:15	321
Patch-SQLAccV4-SetLo...	29-Dec-2014	18:13	932

1. Click to download

STEP 3: OPEN THE DOWNLOADED PATCH (example if you want to delete supplier)



STEP 4: GO www.sql.com.my/utility DOWNLOAD DIAGNOSIS

1. Go to the website

2. User name and the password are the same (sqlutility)

3. Click log in

Authentication Required

The server http://www.sql.com.my:80 requires a username and password. The server says: utility.

User Name: sqlutility

Password: *****

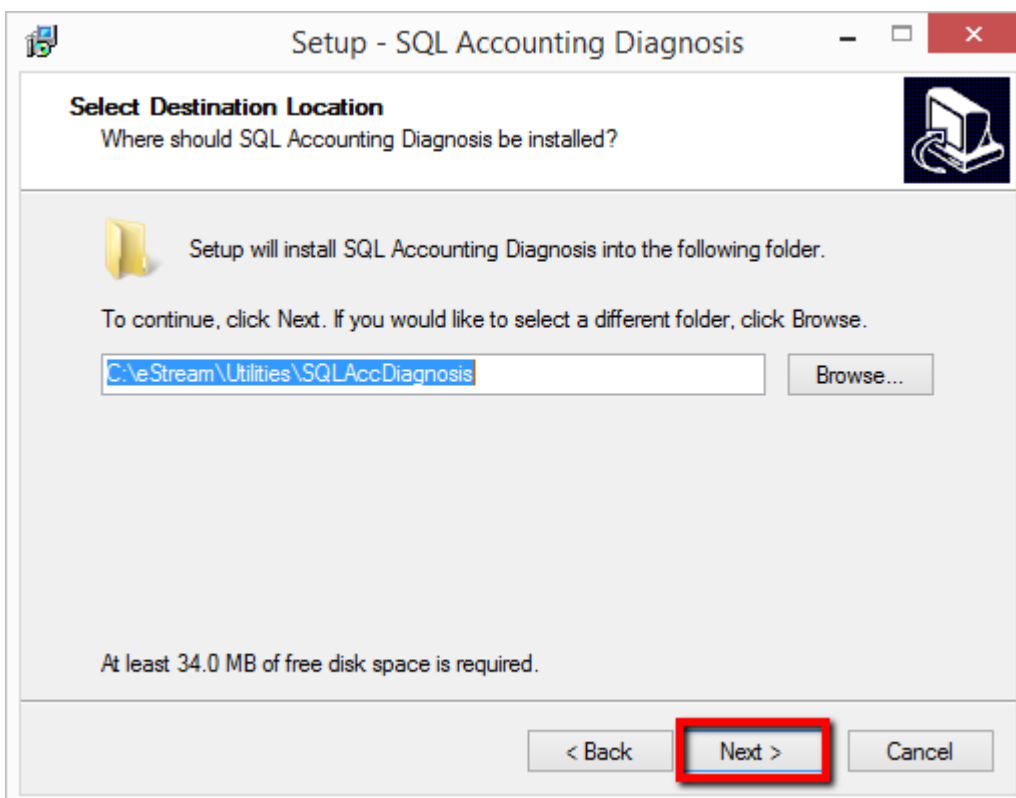
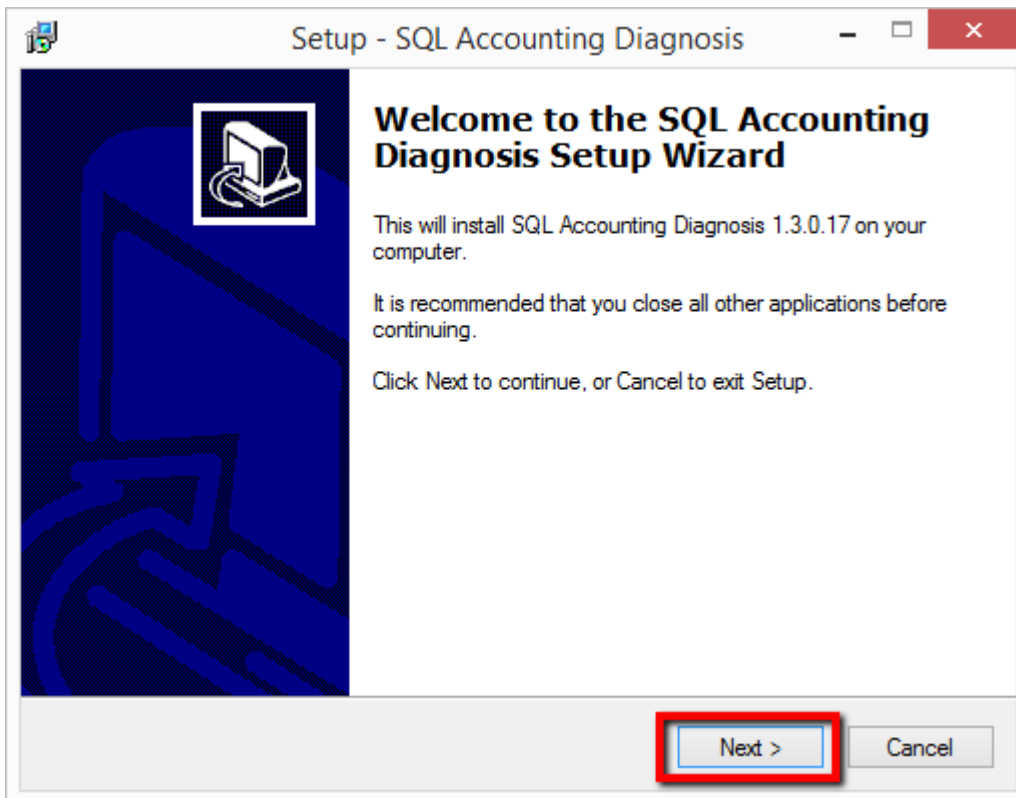
Log In Cancel

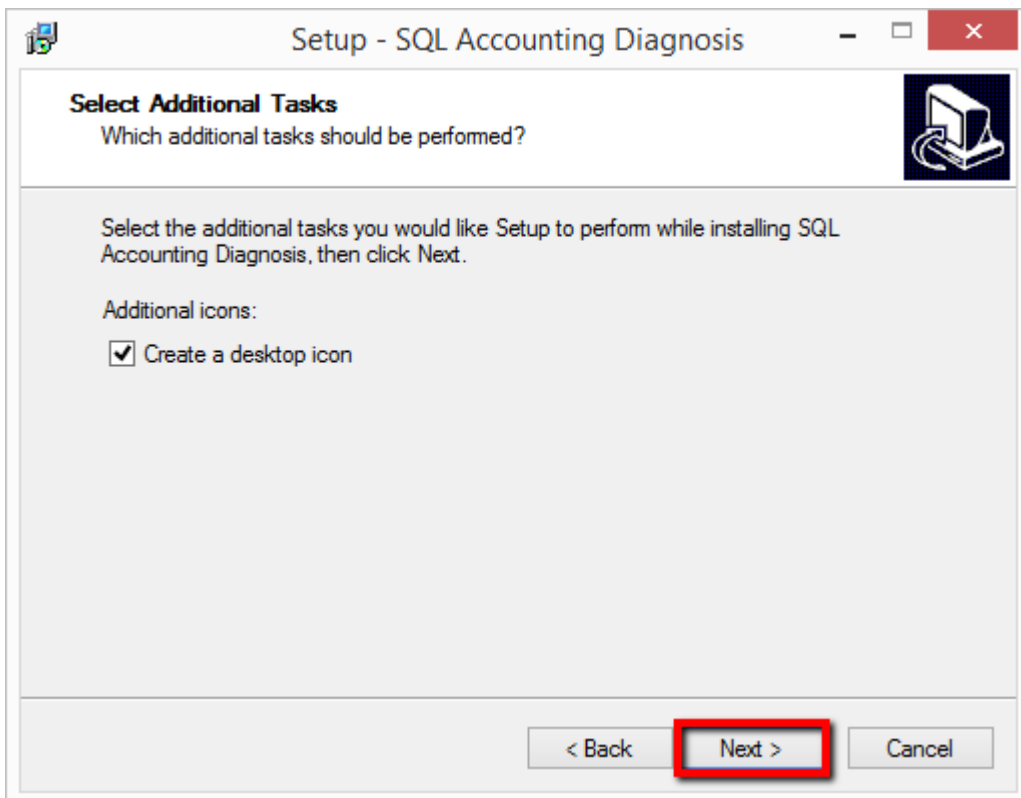
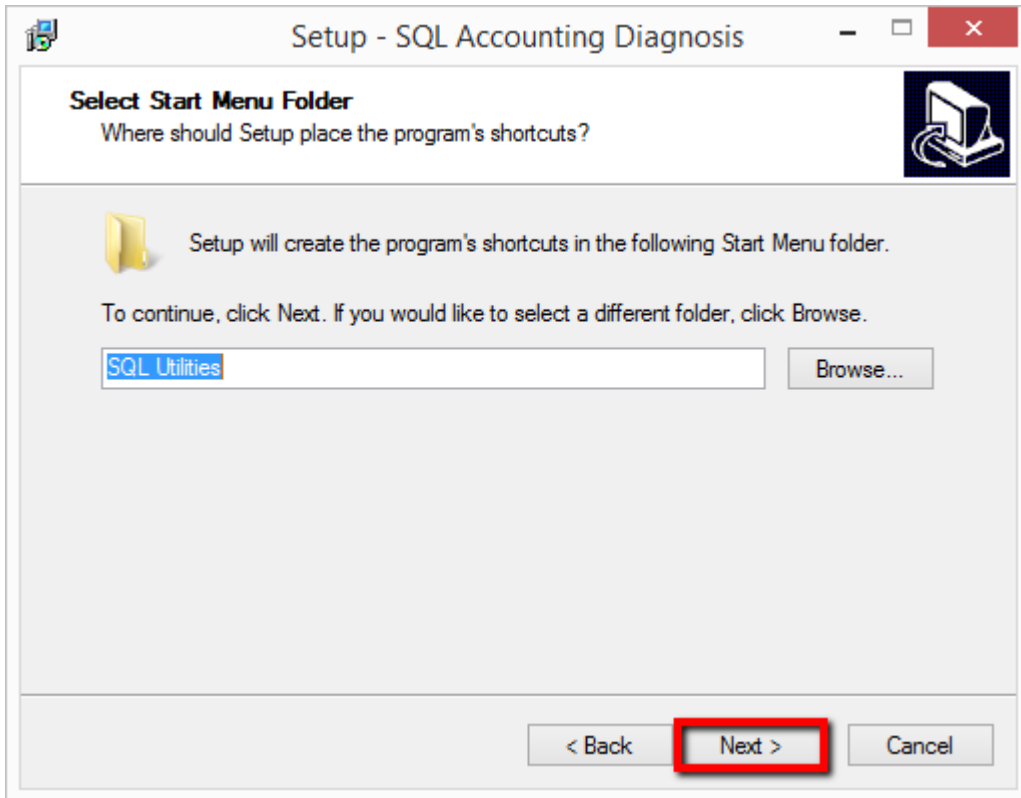
Index of /utility

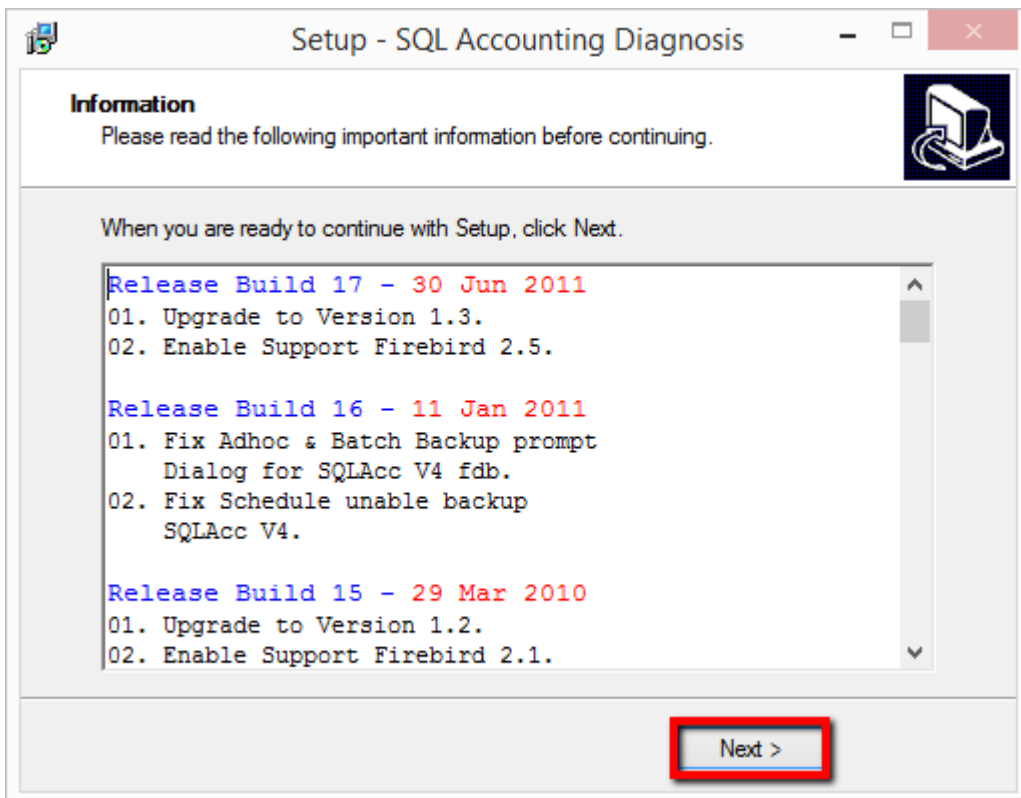
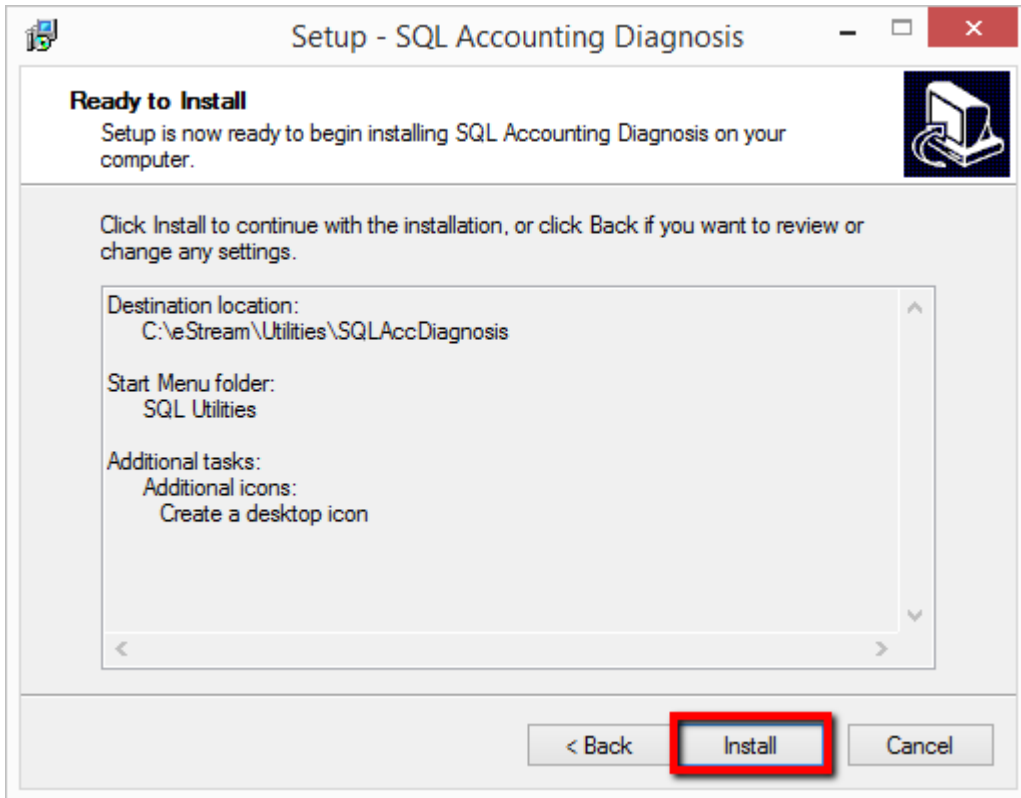
Name	Last modified	Size	Description
Parent Directory		-	
7-zip-x64.msi	11-Oct-2011 14:51	1.3M	
7-zip.msi	11-Oct-2011 14:54	1.1M	
AA_Remote.exe	05-Dec-2008 10:40	128K	
CutePdf.zip	31-Mar-2011 15:04	8.8M	
Epson-TMU220-APD_406...>	19-Aug-2011 14:49	10M	
EpsonDrivers.zip	03-Aug-2011 17:28	920K	
EpsonLQ850-Win7-64Bi...>	08-Jul-2010 12:24	1.0M	
PDF_to_EXCEL.zip	14-Oct-2011 18:31	20M	
PersonalTDLMgr-setup...>	15-Dec-2006 15:07	1.6M	
ReadMe.txt	30-May-2012 09:36	5.5K	
Remote.exe	18-Jun-2009 15:18	1.1M	
ResetSQLAccBars.zip	13-Jun-2007 16:26	5.0K	
SQL.Import.UtilityR2...>	15-Dec-2006 15:19	1.3M	
SQLAccConsolidate-se...>	15-Dec-2006 15:16	2.0M	
SQLAccDBProperties-s...>	15-Dec-2006 15:08	1.2M	
SQLAccDiagnosis-setu...>	30-Jun-2011 10:57	13M	
SQLAccExport-setup.exe	19-Apr-2007 14:02	1.0M	
SQLAccExportV3-setup...>	29-Jun-2010 10:04	3.0M	
SQLAccExportV4-setup...>	10-Jan-2015 08:40	3.6M	
SQLAccFE-setup.exe	17-May-2007 13:54	1.8M	
SQLAccGlbDocNoChange...>	26-Sep-2008 17:55	2.9M	
SQLAccGlbPriceChange...>	17-Feb-2014 18:59	6.8M	
SQLAccImportV3-setup...>	18-Oct-2011 16:04	1.8M	
SQLAccImportV4-setup...>	21-Apr-2015 13:59	1.8M	
SQLAccPOSDailyCSRpt-...>	30-Oct-2007 18:21	3.8M	
SQLAccRP-setup.exe	27-Mar-2009 08:33	1.4M	
SQLAccRePosting-setu...>	15-Dec-2006 15:11	1.4M	
SQLAccSLPHImp-setupV...>	12-Apr-2011 11:12	3.1M	
SQLAccSLPHImp-setupV...>	16-May-2013 12:27	3.4M	
SQLAccTxtImp-setup-o...>	06-Sep-2013 13:45	6.6M	
SQLAccTxtImp-setup.exe	15-Apr-2015 15:38	3.3M	
SQLAccWicTxtImp-setu...>	28-Dec-2009 15:35	2.9M	
SQLAccXLSnMDBImp-set...>	26-Mar-2012 15:29	5.8M	
SQLAccXLSnMDBImpUE-s...>	14-Jun-2011 10:03	3.0M	
SQLBatchBackup-setup...>	20-Jul-2006 10:07	2.1M	

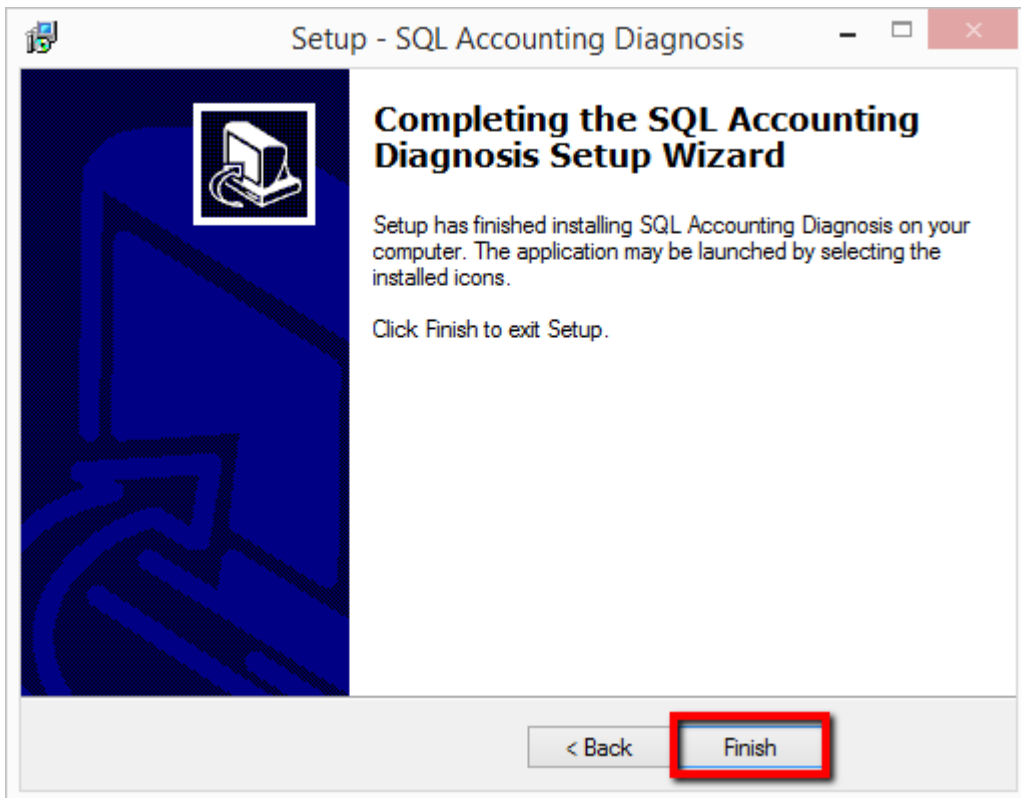
4. Click to download

-After download completed, click the setup:

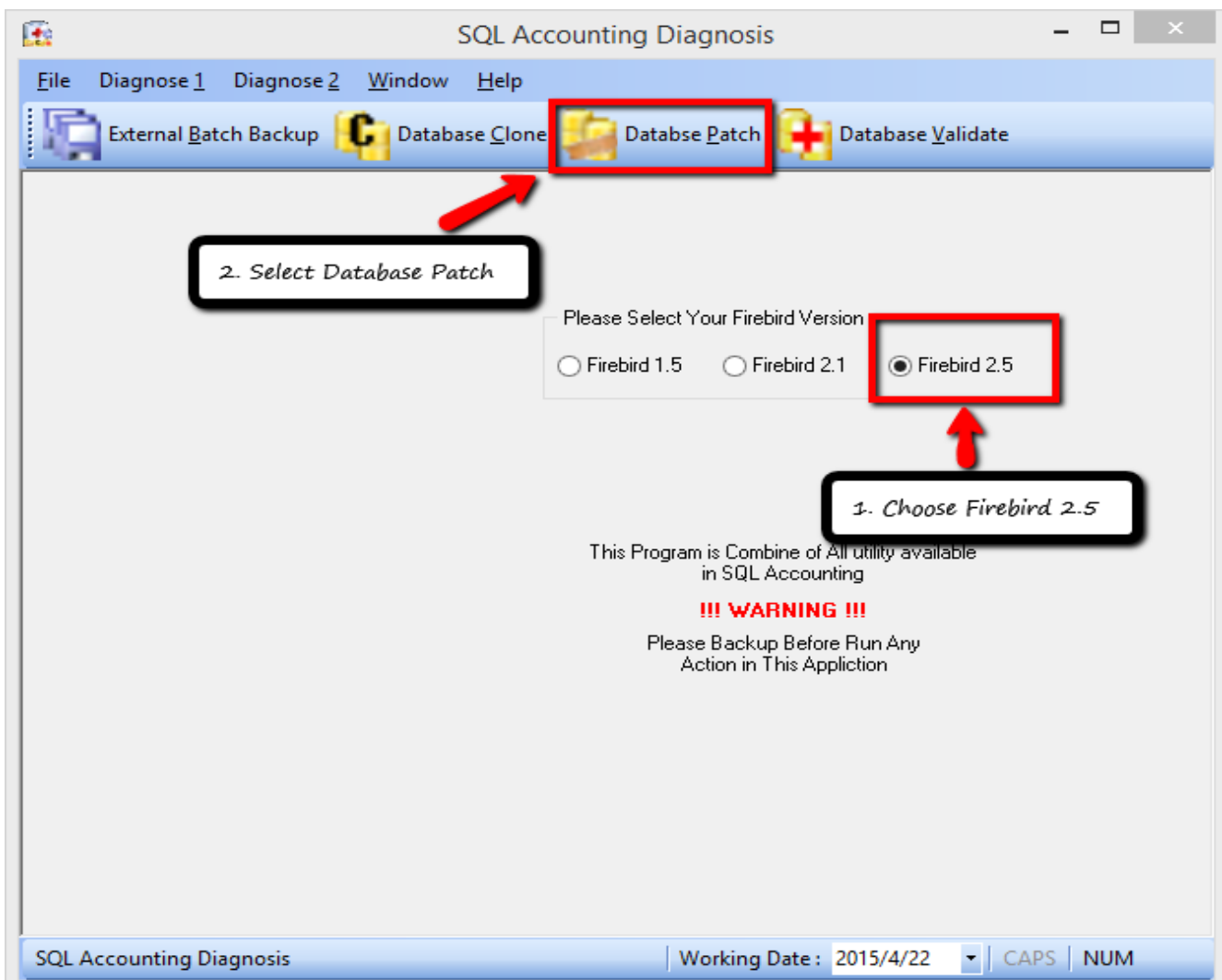


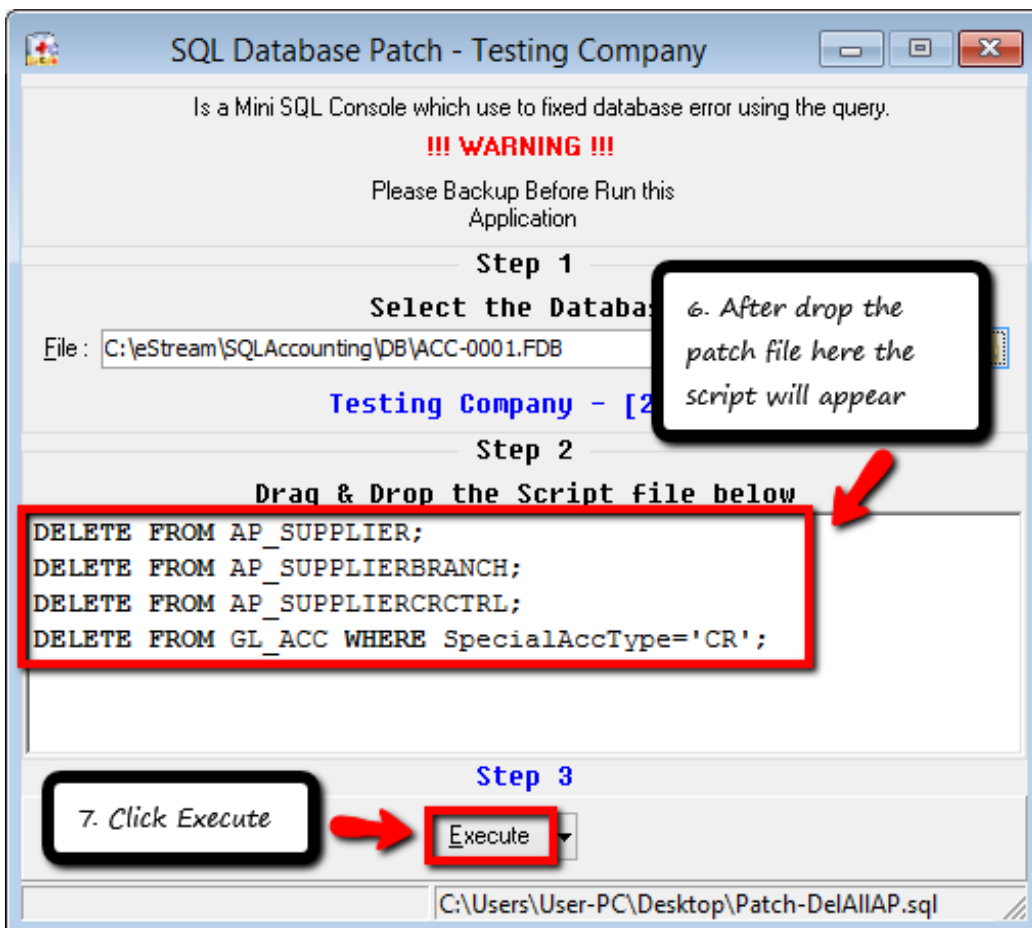
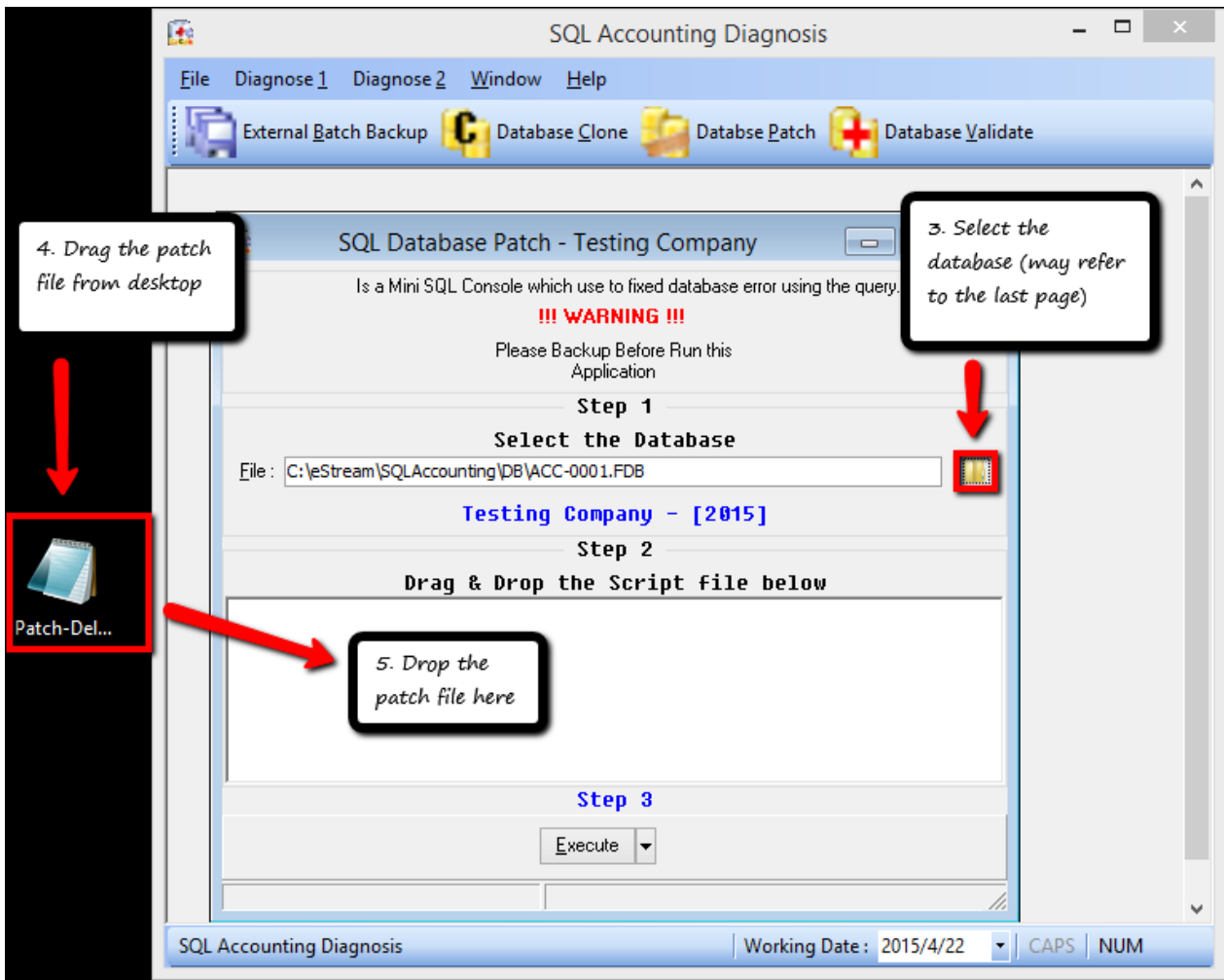


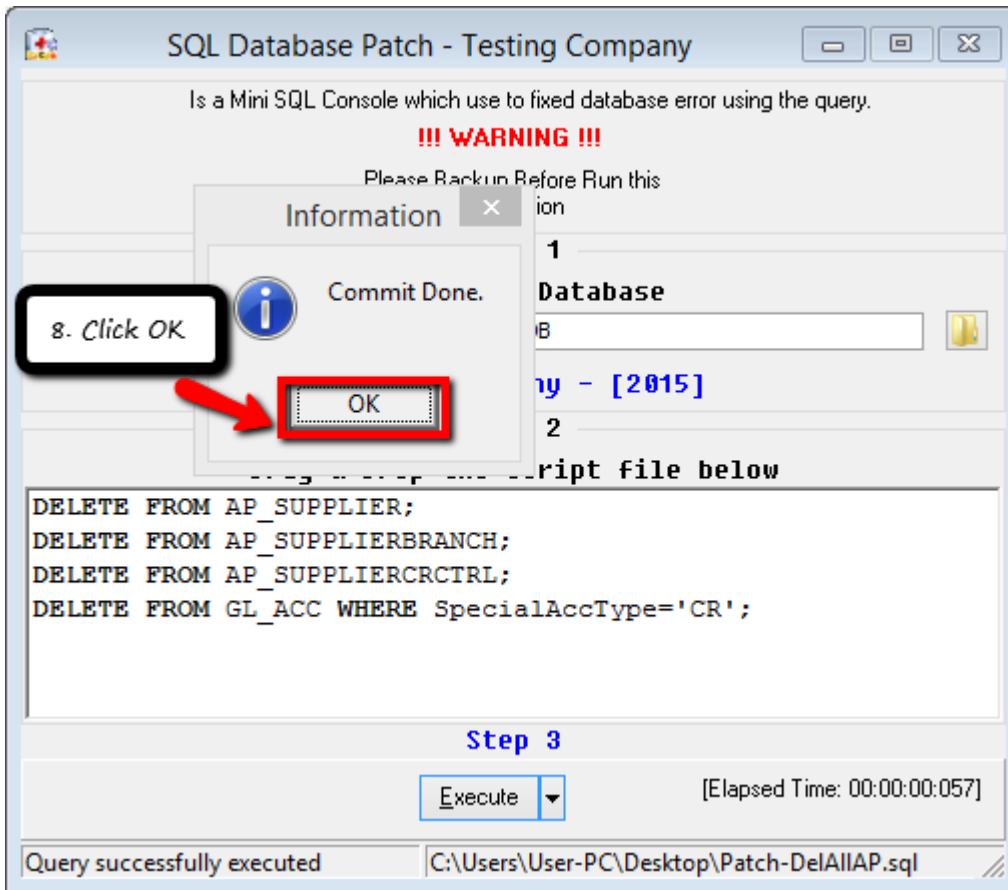




STEP 5: OPEN SQL ACCOUNTING DIAGNOSIS







-----DONE-----

Attention: If don't know which database need to choose, may refer here

