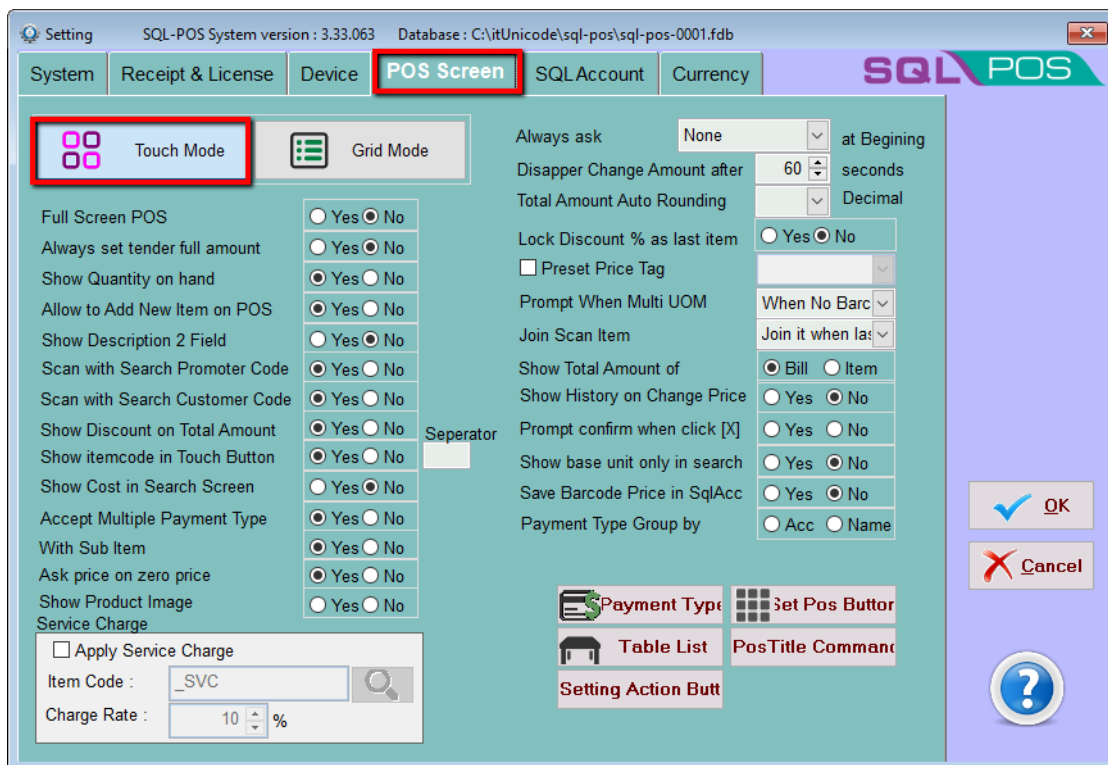


How to setup category & load photo display on touch mode ?

- i. Go to setting | POS Screen | Touch Mode | press OK



- ii. Select Category | New | Example : Vegetable



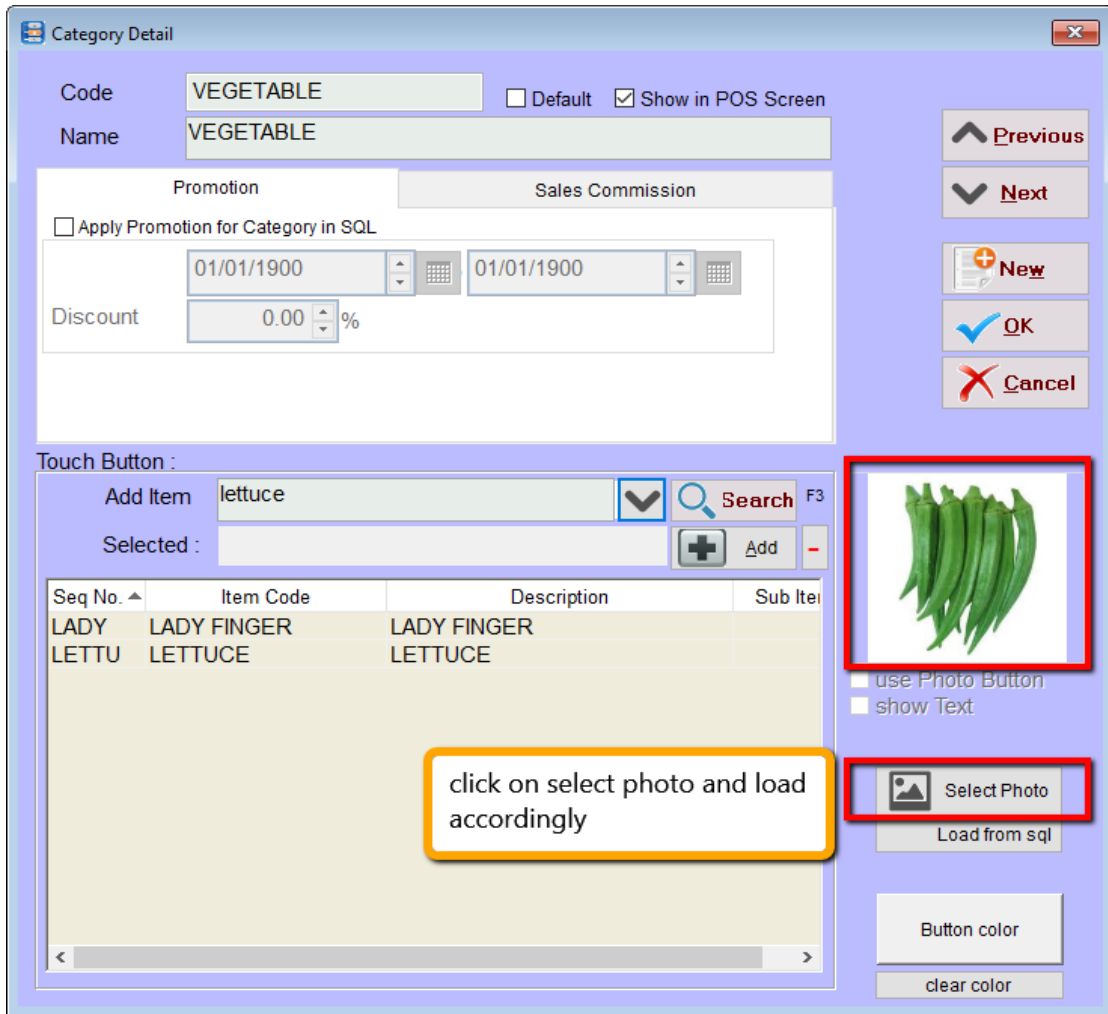
iii. Select Item, eg. Lady Finger

The screenshot shows a software window titled "Category Detail" with a light blue background. At the top, there are input fields for "Code" (VEGETABLE) and "Name" (VEGETABLE). To the right of the "Code" field are checkboxes for "Default" (unchecked) and "Show in POS Screen" (checked). Below these are tabs for "Promotion" and "Sales Commission". Under the "Promotion" tab, there is a checkbox "Apply Promotion for Category in SQL" (unchecked), two date pickers both set to "01/01/1900", and a "Discount" field set to "0.00 %". On the right side of the window, there are five buttons: "Previous" (up arrow), "Next" (down arrow), "New" (plus icon), "OK" (checkmark), and "Cancel" (X icon).

Below the main form is a section labeled "Touch Button :". It contains an "Add Item" field with a dropdown arrow, a "Selected :" field with a plus icon and the word "Add", and a table with two columns: "PRODUCT" and "DESCRIPTION". The table has a scrollable list of items. The first item, "LADY FINGER", is highlighted in blue and is enclosed in a red rectangular box. Below it, the text "LADY FINGER" and "LETTU LETTU" is partially visible. To the right of the table is a photo of green ladyfinger beans. Below the photo are buttons for "Select Photo", "Load from sql", "Button color", and "clear color".

| Seq No. ▲ | PRODUCT | DESCRIPTION |
|-----------|-------------|-------------|
| | LADY FINGER | LADY FINGER |
| | LADY FINGER | LADY FINGER |
| | LETTU | LETTU |

iv. You can also load the photo as display photo in POS, continue to update all item



v. SQL POS will show it as picture below

